



Advanced Data Analysis INSIDE Lotus Notes

IntelliPRINT Analytics is an advanced data analysis solution that has been designed specifically for end users of Lotus Notes & Domino applications. It is a native Analysis component within the collaborative Notes & Domino framework and enables end users to transform any Notes View into an analysis model with a single mouse-click. Users can then analyze the data within the workflow and security framework of their Notes applications.



End users are able to transform data from a Notes View with a single click, model data to reflect their business situation by using a drag and drop interface, and also visualize data in the form of charts. It also enables the user to enrich the data model by adding columns from other views and databases.

In addition, users are able to save all the effort they invest in creating an analysis model as a template. The next time they are faced with a business situation that requires a similar analysis model, they can apply the template on the current data to instantly transform it to reflect all dimensions of the saved analysis template.

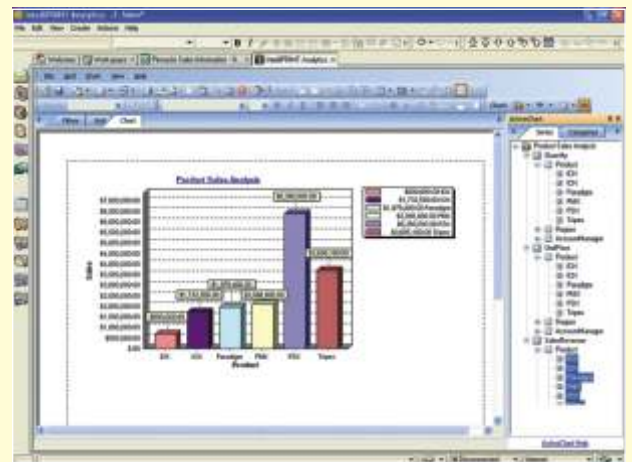
IntelliPRINT Analytics enables users to analyze real-time data with the flexibility to model the data to suit business situations in a dynamic and user friendly way. IntelliPRINT Analytics is used by organizations to supplement their reports from Notes & Domino applications. When users have a requirement to get to information outside the scope of their existing reports without placing an overhead on the IT team, IntelliPRINT Analytics enables them to do so in a rapid and user friendly way.

➔ Key Benefits

- ➔ Native data analysis component for Notes & Domino applications
- ➔ Provides the ability to rapidly create a data model that spans one or more Views across one or more databases, to reflect business situations that require data analysis in a rapid, user friendly manner
- ➔ Business users achieve a high level of competency with minimal training and virtually no IT overhead
- ➔ Seamless integration of analysis within the context of Notes & Domino applications greatly enhances usage efficiency and productivity
- ➔ Unlocks the business value of Notes & Domino data

➔ Features

- ➔ Instant transformation of Notes Views to Analysis models within Notes
- ➔ Ad hoc reporting, analysis and charting on Notes data
- ➔ Provides interactive data analytics like grouping, sorting, filtering, charting, etc.
- ➔ End user friendly analysis operation can be performed with minimal training
- ➔ Reports can be exported to formats like PDF, Excel, Text, etc.
- ➔ Data models can be saved and reused in the form of templates



Client System Requirements

Minimum Hardware Requirements

CPU : Intel Pentium and compatibles
RAM : 512 MB

Software Requirements

Operating System : Windows 2000, XP, Vista
Notes Client : Lotus Notes Client R5 or higher
Browser Client : Internet Explorer v5 or higher

Server System Requirements (Domino)

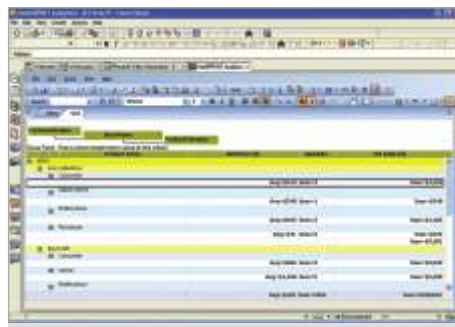
Minimum Hardware Requirements

CPU : Intel Pentium or higher and compatibles
RAM : 1 GB
Free Hard Disk Space: 500 MB (20 MB for installation files, rest for temporary workspace)

Software Requirements

Operating System: Windows 2000 Server, Windows 2003 Server
Domino Server: 5.0 or higher

Sample Reports



About IntelliPRINT

IntelliPRINT natively extends the functionality of Notes and Domino clients by adding reporting, analysis and dashboard capabilities within the business and workflow context of Notes applications. Users are able to run real-time reports using IntelliPRINT Reporting, analyze data using IntelliPRINT Analytics, and visualize the state and ongoing progress of business processes using IntelliPRINT Dashboard. These solutions can be deployed on both the Lotus Notes and Domino platforms as a plugin component.

