



## Comparison Document

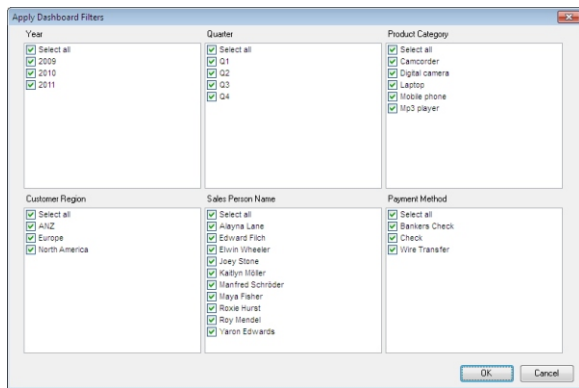
**IntelliPRINT**  
for Lotus Notes & Domino

## What's New in IntelliPRINT Dashboard Reporting 6.0

### Feature Comparison - 5.x vs. 6.0

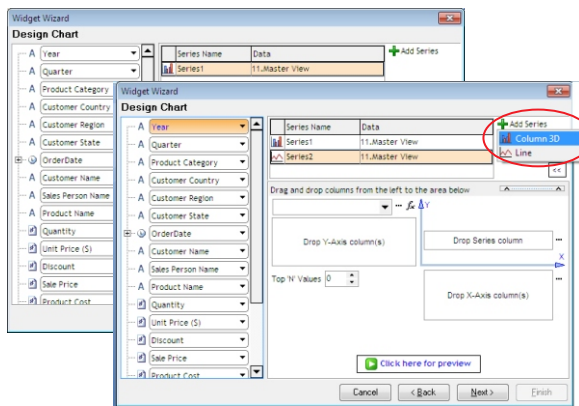
FEATURE	5.x	6.0
Dashboard Filters	No	Yes
Multi-series Charts	No	Yes
Custom Grouping of rows of data	No	Yes
Adding a New Column from existing columns using a formula	No	Yes
Waterfall Charts	No	Yes
Funnel Charts	No	Yes
'Rotate' Marks by 90o degrees inside a chart	No	Yes
Ability to place Marks 'Inside' a Chart Object	No	Yes
Custom Chart Colors	No	Yes
Displaying only the Top 'N' Values in a chart	No	Yes
Displaying X-axis values sorted in ascending or descending order	No	Yes
Pivot Table – Expanding and collapsing rows and columns of data	No	Yes

## New Features



### Dashboard Filters

Dashboard Filters are defined during dashboard design and enable end users to filter a Dashboard (all Widgets) in real-time by selecting any combination of values from the available columns. For example, using the Dashboard Filter functionality users can filter all widgets in a 2011 Sales Dashboard by Geography, Product, Period, Salesperson, etc.

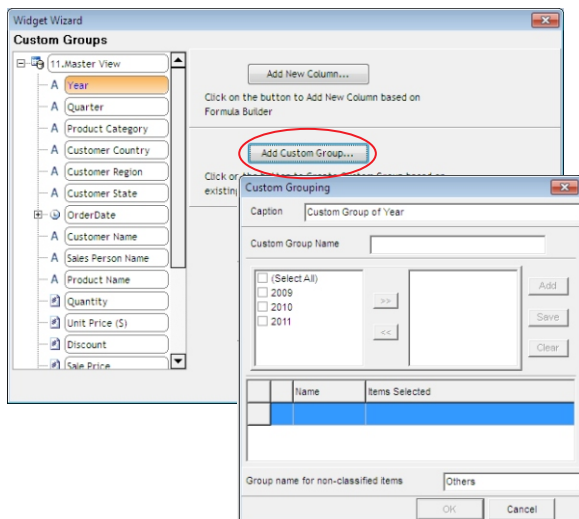


### Multi-series Charts

Multi-series Charts enable user to simplify the visualization of many complex business situations, such as comparing Sales Targets and Performance for sales persons for a particular period. A Multi-series Chart also helps reduce the number of charts required to meet an information need.

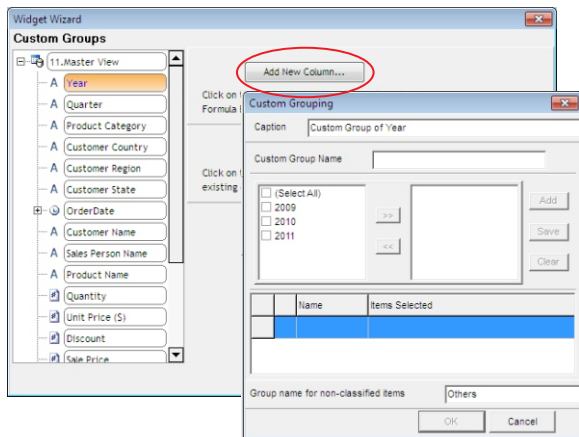
This new feature in IntelliPRINT Dashboard Reporting 6.0 gives users the ability to display more than one series of data (in the Y-axis) in the same chart as long as the X-axis fields for all the series are the same. Using the example from the previous paragraph, one can view Sales Targets as one series and Sales Performance as another series in the same chart with Sales Person as X-axis. Each series can come from a different data source. There is also no limit on the number of series that can be defined.

### Enhanced Widget options (Charts, Pivot Tables and Tables)



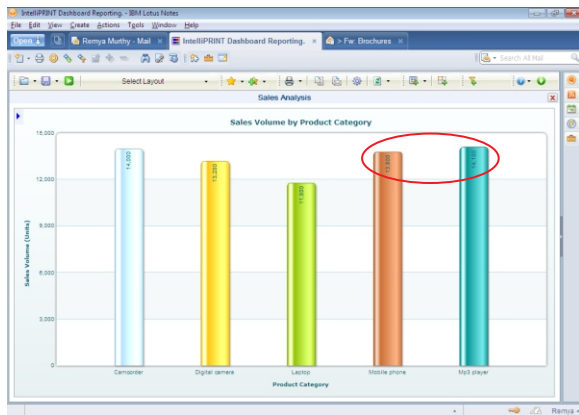
**Custom Grouping** - Rows of data containing common values can be grouped together to create user friendly groups. For example, countries can be grouped by region; products can be grouped by category, etc.

## New Features

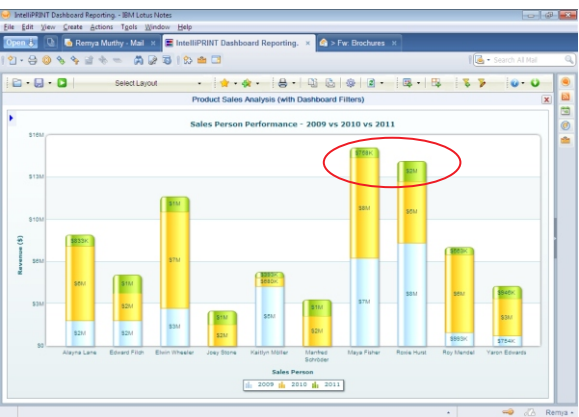


**Adding a New Column** - Users can add a new column to their data, the values of which are derived from existing columns using formulae

## Enhanced Chart Options



The new **'Rotate'** option in Chart properties displays marks by rotating them by 90°. Chart objects that support this feature are - column, bar, pie, doughnut, gauge, area, funnel and waterfall.

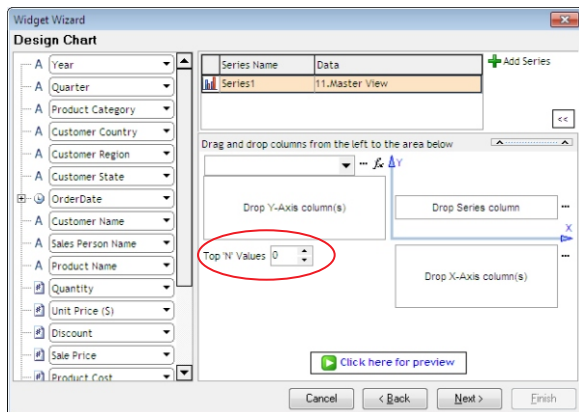


The new **'Place Inside'** option in Chart properties displays marks by placing them inside chart objects. Chart objects that support this feature are - column, bar, pie, doughnut, gauge, area, funnel and waterfall.

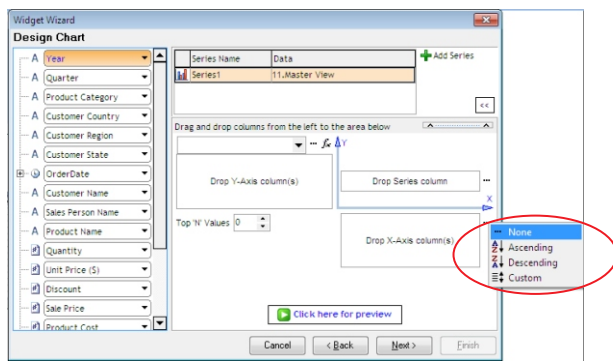


**Custom Chart Colors** - Users can define custom colors for chart objects

## New Features

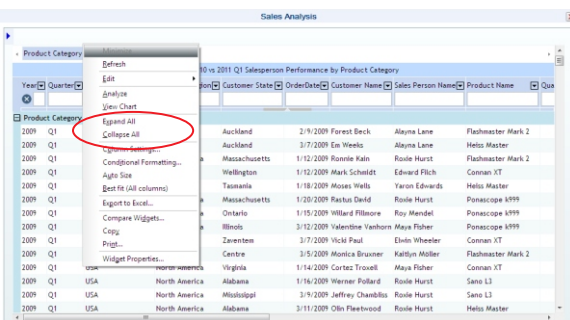


**Top 'N' values** - Users can choose to display only the top 'N' values in a chart



**Sorting X-axis in ascending or descending order** - Using this new feature users have the flexibility to display X-axis values in ascending / descending order

## Enhanced Pivot Table options

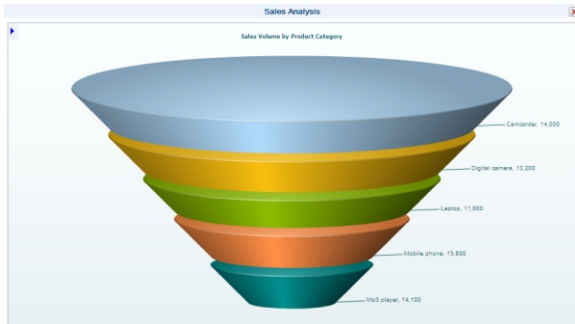


**Expanding / collapsing Row & Column Groups** - Users can expand or collapse rows and columns at each sub level to view detailed or summarized information

## New Chart Types



**Waterfall Charts** - Waterfall charts are a special type of Floating Column chart. A waterfall chart shows how a value increases or decreases by a series of intermediate values, leading to a final value.



**Funnel Charts** - Funnel charts are used to plot streamlined data. A funnel chart consists of various segments, each representing a data set